

# Outer Dowsing Offshore Wind

## Environmental Statement

### Chapter 30 Human Health

#### Volume 2 Figures

Date: March 2024

Document Reference: 6.2.30

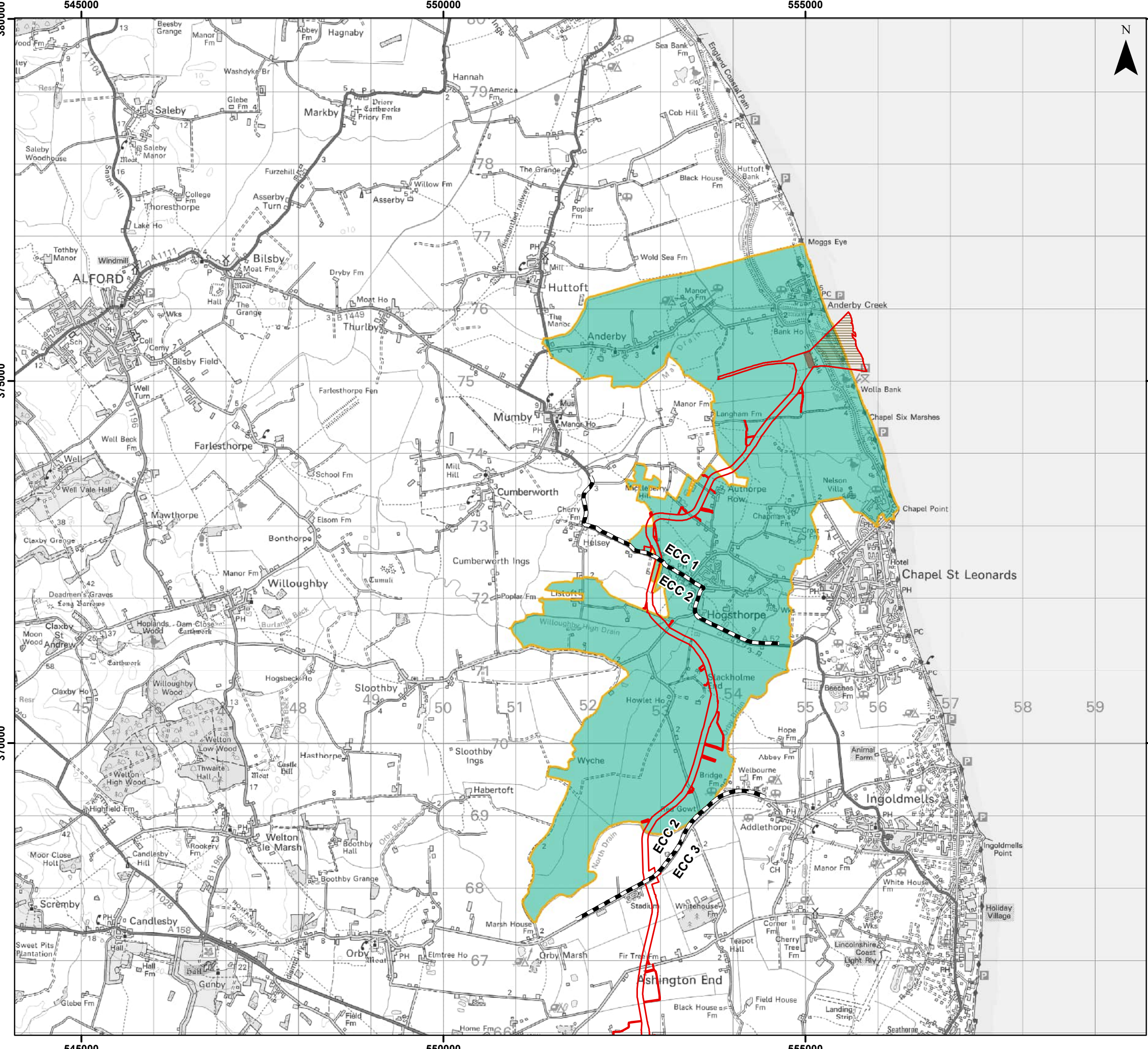
Pursuant to APFP Regulation: 5(2)(a)

Rev: 1.0

Company:	<b>Outer Dowsing Offshore Wind</b>	Asset:	<b>Whole Asset</b>			
Project:	<b>Whole Wind Farm</b>	Sub Project/Package:	Whole Asset			
Document Title or Description:	Chapter 30 Human Health					
Internal Document Number:	PP1-ODOW-DEV-CS-FIG-0030	3 <sup>rd</sup> Party Doc No (If applicable):	N/A			
Outer Dowsing Offshore Wind accepts no liability for the accuracy or completeness of the information in this document nor for any loss or damage arising from the use of such information.						
Rev No.	Date	Status / Reason for Issue	Author	Checked by	Reviewed by	Approved by
1.0	March 2024	DCO Application	SLR	SLR	Shepherd and Wedderburn	Outer Dowsing

## Table of Figures

- Figure 30.1 East Lindsey 010B Lower Super Output Area (document reference 6.2.30.1)
- Figure 30.2 Boston 007A Lower Super Output Area (document reference 6.2.30.2)
- Figure 30.3 South Holland 007C Lower Super Output Area (document reference 6.2.30.3)



### Legend

- Order Limits
- Onshore Segment Break
- Landfall Trenchless Works Area
- Transition Joint Bay Area
- East Lindsey 010B Lower Super Output Area  
(Representative of Population at Wolla Bank)

Sources:  
Source: Office for National Statistics licensed under the Open Government Licence v.3.0



Coordinate System: British National Grid  
 0 1 2 km  
 Scale: 1:50,000

Environmental Statement  
 East Lindsey 010B Lower Super Output Area  
 Figure 30.1

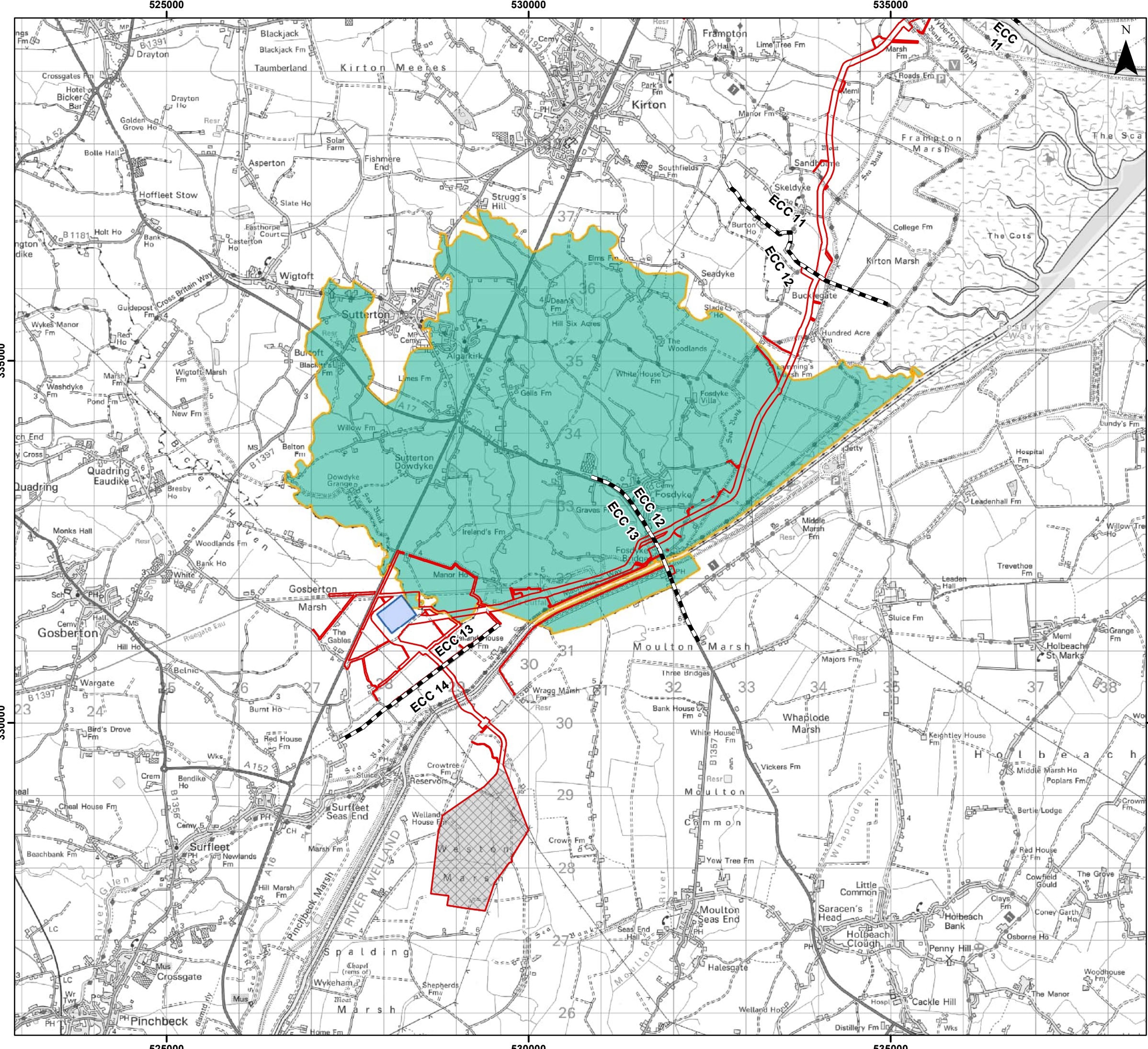


Date: 27/02/2024  
 Produced By: JRS  
 Revision: 0.1



© Crown copyright [and database rights] (2024)  
 0100031673

Document Path: P:\05356 - Gobe Consultants Ltd\01012 GTR Outer Dowsing\Tech\GIS\DWG\Wking\2023 09 Environmental Statement\Human Health\05356\_00012\_0804\_0 East Lindsey 010B Lower Super Output Area.mxd



- ### Legend
- Order Limits
  - Onshore Segment Break
  - Onshore Substation (OnSS)
  - Landfall Trenchless Works
  - Transition Joint Bay
  - Connection Area
  - Boston 007A Lower Super Output Area  
(Representative of Population at Wolla Bank)

Sources:  
Source: Office for National Statistics licensed under the Open Government Licence v.3.0



Coordinate System: British National Grid  
 0 1 2 km  
 Scale: 1:50,000

Environmental Statement  
 Boston 007A Lower Super Output Area  
 Figure 30.2

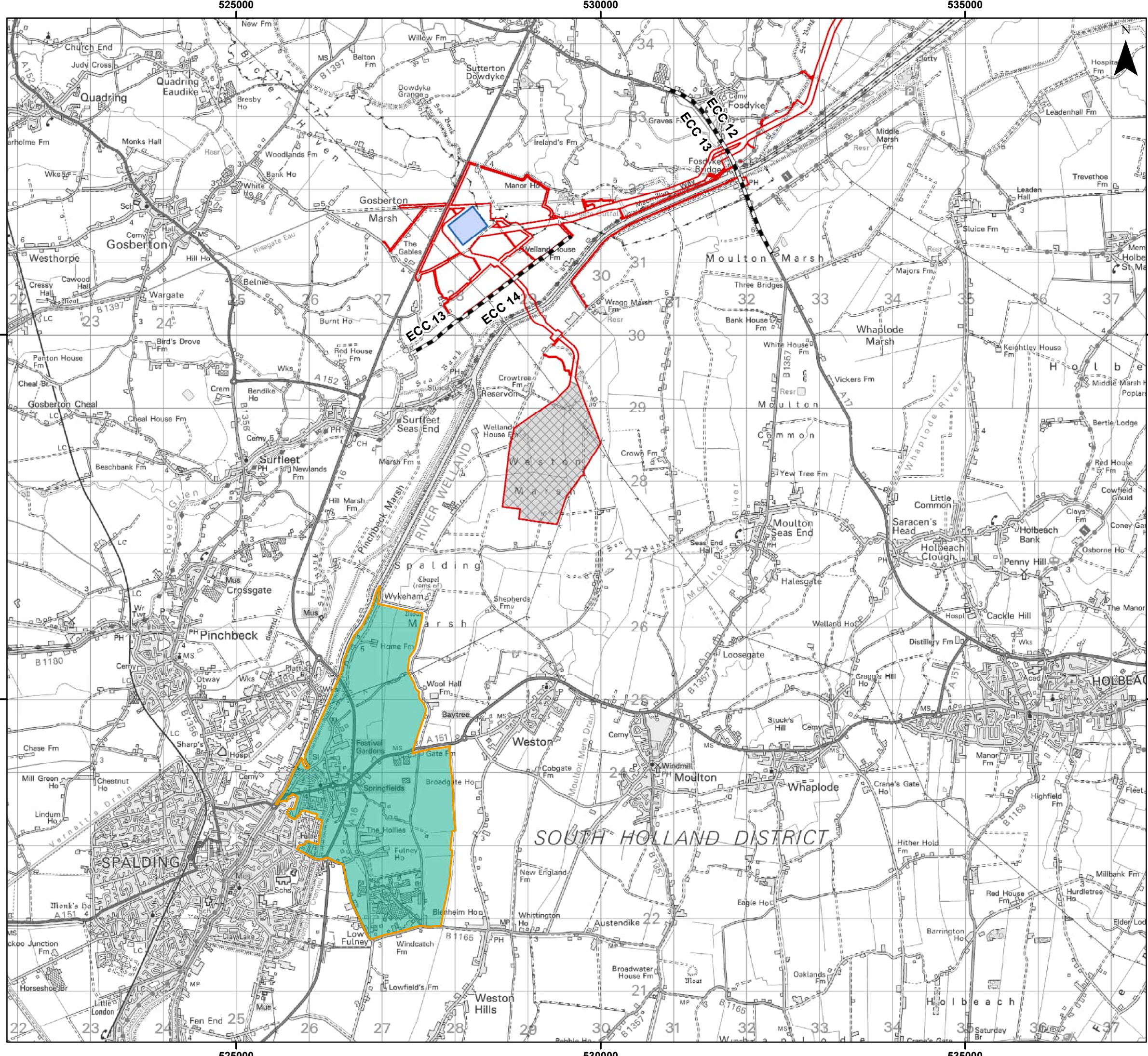


Date: 27/02/2024  
 Produced By: JRS  
 Revision: 0.1



© Crown copyright [and database rights] (2024)  
 0100031673

Document Path: P:\05356 - Gobe Consultants Ltd\010212 GTR Outer Dowsing\Tech\GIS\DWG\Wing\2023 09 Environmental Statement\Human Health\05356\_00012\0803\_0 Boston 007A Lower Super Output Area.mxd



### Legend

- Order Limits
- Onshore Segment Break
- Onshore Substation (OnSS) Footprint
- Connection Area
- South Holland 007C Lower Super Output Area (Representative of Population at the Substation at Surfleet Marsh)

Sources:  
 Source: Office for National Statistics licensed under the Open Government Licence v.3.0



Coordinate System: British National Grid  
 0 1 2 km  
 Scale: 1:50,000

Environmental Statement  
 South Holland 007C Lower Super Output Area  
 Figure 30.3



Date: 27/02/2024  
 Produced By: JRS  
 Revision: 0.1



© Crown copyright [and database rights] (2024)  
 0100031673

Document Path: P:\05356 - Gobe Consultants Ltd\0012 GTR4 Outer Dowsing\Tech\GIS\DWG\Wing\2023\_09 Environmental Statement\Human Health\05356\_00012\_0801\_0 South Holland 007C Super Output Area.mxd